



238 Pillow Street  
Butler, PA 16001  
724-283-4681  
724-283-5939 (fax)  
www.bwieagle.com

# PRODUCT INFORMATION BULLETIN

## TWO-TIMER PLUS-RT Anti-Freeze Spray System MODEL 60-9100-RT

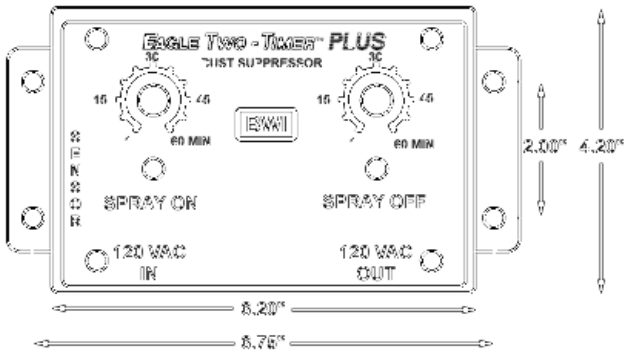
### DESCRIPTION

The EAGLE® TWO-TIMER PLUS RT is designed to spray a controlled amount of anti-freeze solution on conveyor belts to prevent belt surface freezing.

A temperature sensor allows the belt spray to operate only when the ambient temperature drops below 32 degrees Fahrenheit. Two adjustable timers turn sprays on and off in continuous preset cycles, while the conveyor is running. If the conveyor stops, the sprays will not operate.

This system also includes a reset button that permits the operator to override its normal operation and force the unit to perform a single spray-on cycle at any time - regardless of temperature.

### DIMENSIONS

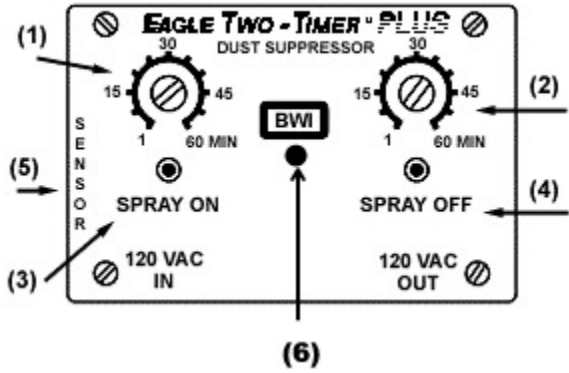


### SPECIFICATIONS

AC Input	120 VAC 20W
Fuse Protected	2 Amp
Operating Temperature	-40° to 60°C
AC Output	120 VAC 5 Amp <b>MAX</b>
On and Off Timers	1 - 60 Minutes, Adjustable
Memory (EEPROM)	On - Off (user selectable)
Temperature Controlled Operation	Less than 33 Degrees



### CONTROLS AND INDICATORS



- 1) On Time Adjustment - Potentiometer used to adjust solenoid "on-time" from 1-60 minutes. (Note #1)
- 2) Off Time Adjustment - Potentiometer used to adjust solenoid "off-time" from 1-60 minutes. (Note #1)
- 3) Spray On LED - When illuminated, indicates unit is in the 'spray-on' cycle.
- 4) Spray Off LED - When illuminated, indicates unit is in the 'spray-off' cycle.
- 5) Temperature Sensor Input - 3 conductor cable from remote temperature sensor.
- 6) Reset Button - Momentary pushbutton used to restart the Spray-On cycle.

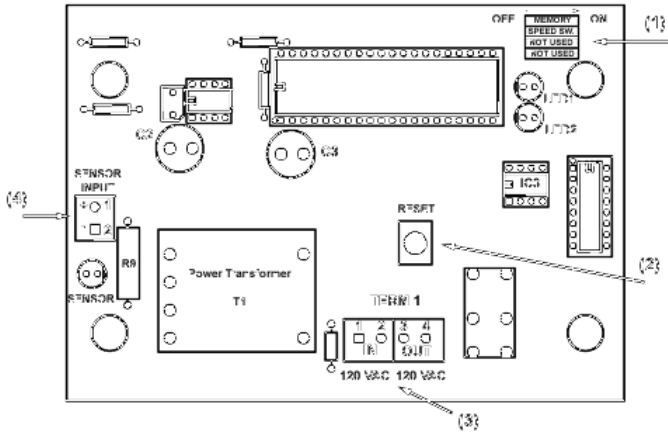
Note #1 - Any adjustments of the potentiometers for both the "on" and "off" timers will not take effect until the cycle the unit is currently in completes.

# TWO-TIMER PLUS-RT

## Anti-Freeze Spray System

### MODEL 60-9100-RT

#### SET-UP OPTIONS



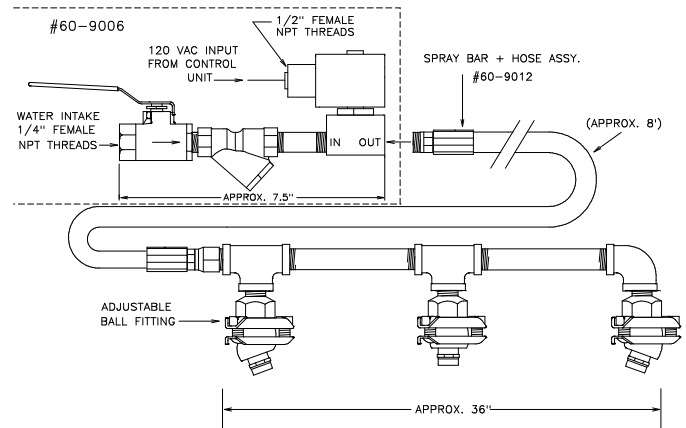
- 1) **SW1-1 Memory Select Switch** - Enables or disables the memory when AC power is removed. The default setting for this switch is "OFF". To change this option, do the following:
  - A) Locate the 4-position DIP switch in the upper right section of the PC Board (#1)
  - B) The top switch (SW1-1) should be in the "OFF" position (rocker switch pushed towards the left) To enable the memory, push this rocker switch towards the "right" to the on position. (A ball point pen or small screwdriver should be used to move the switch)
- SW1-2 Temperature Switch** - Enables or disables the temperature input signal. This switch must be set to the "ON" position.
- SW1-3** - Not used on this model. Please keep switch in the "OFF" position.
- SW1-4** - Not used on this model. Please keep switch in the "OFF" position.
- 2) **Reset Switch** - A momentary pushbutton used to reset the unit. (This will allow any switch settings to be "re-read" and immediately take effect.
- 3) **120VAC In/Out Terminals** - Connect 120VAC input to terminals 1&2. Connect 120VAC output to solenoid on terminals 3&4.
- 4) **Temperature Sensor Input Terminals** - Connects the temperature input to the PC Board.

DOCUMENT DATE: 11-Aug-04



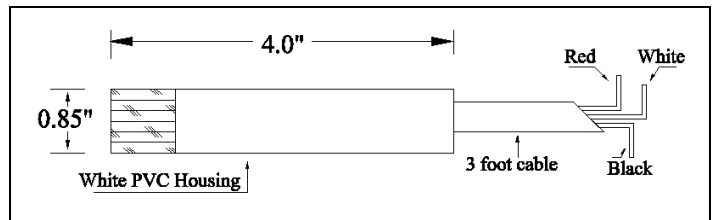
238 Pillow Street  
Butler, PA 16001  
(724) 283-4681  
Fax (724) 283-5939  
[www.bwieagle.com](http://www.bwieagle.com)

#### SOLENOID/SPRAY-BAR SPECIFICATIONS



AC Input	120 VAC 6W
Maximum Water Pressure	500 P.S.I.
Minimum Water Pressure	5 P.S.I.
Maximum Water Temperature	180 Degrees Fahrenheit
Gallons Per Minute @ 400 P.S.I.	1.9 GPM

#### SENSOR MODEL 10-7738 DIMENSIONS



#### SENSOR WIRING

Red Wire	+ DC Input from Control Unit
Black Wire	- DC Input from Control Unit
White Wire	Temperature Signal to Control Unit

#### SENSOR SPECIFICATIONS

Dimensions	4 in. x .85 in. O.D.
Sensor Type	Linear Temperature Sensor
Housing / Mounting	PVC / General Mount
Sensor Power Requirement	5 - 30 VDC (From Control Unit)
Sensor Cable	3 Ft. piece of 22awg, 3 conductor
Temperature Sensing Range	-40° F to +200° Fahrenheit