



238 Pillow Street
Butler, PA 16001
724-283-4681
724-283-5939 (fax)
www.bwieagle.com

PRODUCT INFORMATION BULLETIN

AIR-EAGLE® SR PLUS 2.4 GHz RF Transmitter MODEL 36-1410-4B-DC – Rev.3

DESCRIPTION

The AIR-EAGLE SR PLUS, MODEL 36-1410-4B is an R.F. transmitter capable of sending up to four digital button commands to the Air-Eagle SR Receiver, model 38-5000 or 38-8000 from up to 1200 feet away. This unit has a convenient thumbwheel switch on the front panel allowing the user to select one of 10 digital addresses. It also has eight user-programmable network frequencies to allow multiple transmitters and receivers to operate simultaneously in the same area without interference.

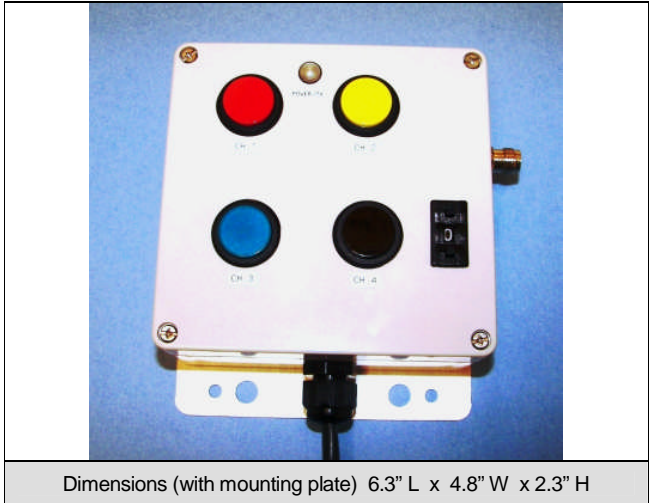
INSTALLATION

1. Mount the AIR-EAGLE SR PLUS TRANSMITTER in a convenient location where the operator will have easy access to all buttons.
2. Install antenna. The unit has an antenna connector located on the right side on the enclosure. Attach the supplied portable antenna to this connector.
3. Connect DC power and control to the proper terminals in your control circuit.

DIGITAL ADDRESS & FREQUENCY SET-UP

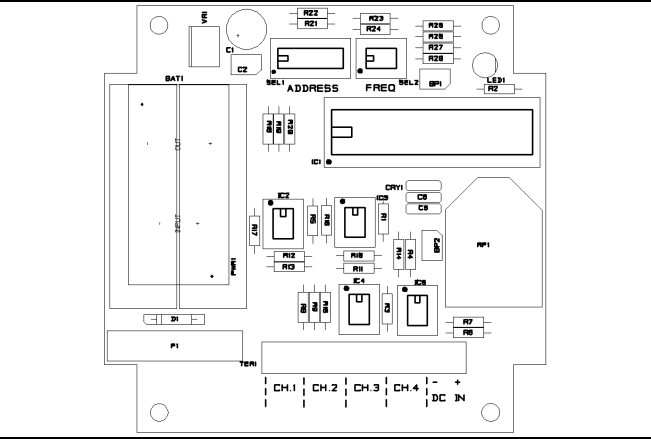
This transmitter is factory programmed to Frequency #1 and Digital Address "0". These settings can be changed by the user in any combination **but must match the receiver that is set up to communicate with this transmitter**

Thumbwheel Switch	0 thru 9 for selecting any one of 10 digital addresses.			
To Change Network Frequency:				
1) Remove top cover.				
2) Select network frequency				
3) Move SW4 on SEL2 to the "CLOSED" position. The TX LED will illuminate (no data is being transmitted during this programming)				
4) Once LED is illuminated, move SW4 on SEL2 back to the "OPEN" position. The TX LED will extinguish.				
5) Programming is now complete. Replace top cover.				
Note – Selected address and frequency settings will be maintained, in the internal flash memory, even if power is removed from unit. The above procedure needs to be performed only if <i>changing</i> network frequency)				
SEL 2 (SW 1-3): (NETWORK FREQUENCY)	Network Address	SW1	SW2	SW3
	1	OPEN	OPEN	OPEN
	2	CLOSED	OPEN	OPEN
	3	OPEN	CLOSED	OPEN
	4	CLOSED	CLOSED	OPEN
	5	OPEN	OPEN	CLOSED
	6	CLOSED	OPEN	CLOSED
	7	OPEN	CLOSED	CLOSED
8	CLOSED	CLOSED	CLOSED	
SEL2 (SW4)	Normal Operation	Programming		
	OPEN	CLOSED		



Dimensions (with mounting plate) 6.3" L x 4.8" W x 2.3" H

CONTROLS & INDICATORS



POWER/TX LED	Illuminates GREEN while power is applied. While any button is depressed and unit is transmitting, this LED will change to RED.
Pushbuttons 1 thru 4	Transmits individual button RF codes to the receiver
Thumbwheel Switch	Used to change digital address of transmitter

APPROVALS

United States (FCC)	OUR-XBEEPRO
Canada (IC)	4214A-XBEEPRO
Europe (CE)	ETSI

AIR-EAGLE® SR PLUS

2.4 GHz RF Transmitter

MODEL 36-1410-4B-DC – Rev.3

SPECIFICATIONS

DC Input	9 - 36 VDC @ 10 Watts
Four Dry Contact Inputs	Pre-wired to included pushbuttons
Enclosure	ABS Plastic NEMA 3, 3R, 4, 12 + 13
Transmit Frequency	2.4GHz Spread Spectrum
Transmitter Coding	10 Digital Addresses
Transmitter Channels	8 Independent Network Frequencies
Antenna Connection	TNC Female
RF Output Power	60 mW
Transmit Range	Approximately 1200 Feet
Operating Temperature	-40° F to +185° F

REPLACEMENT PARTS & ACCESSORIES

PC Board (Main)	36-1412-4B-DC
Standard Antenna (Included):	
2.4GHz TNC Portable Antenna (For distances up to 1200 feet*)	49-1201
Optional Antennas and Accessories – Used to increase range in both non line of sight and line of sight applications. - Contact BWI Eagle for recommendations	
2.4GHz Thru-Hole Mount Mobile Antenna	49-2201
2.4GHz Magnetic Mount Mobile Antenna	49-2202
2.4GHz Omni Directional Antenna	49-3201
2.4GHz 13dB Yagi Antenna	49-3202
Flex Coax Cable w/Connectors – Connects external antenna(s) to base unit(s).	49-4000-XX (XX = # of Feet)
Inline Lightning Arrestor	49-5002
* = Line of Sight	

LIMITED WARRANTY STATEMENT

BWI Eagle Inc. warrants the Air-Eagle Remote Control System, if properly used and installed, will be free from defects in material and workmanship for a period of 1 year after date of purchase. Said warranty to include the repair or replacement of defective equipment. This warranty does not cover damage due to external causes, including accident, problems with electrical power, usage not in accordance with product instructions, misuse, neglect, alteration, repair, improper installation, or improper testing. This limited warranty, and any implied warranties that may exist under state law, apply only to the original purchaser of the equipment, and last only for as long as such purchaser continues to own the equipment. This warranty replaces all other warranties, express or implied including, but not limited to, the implied warranties or merchantability and fitness for a particular purpose. BWI Eagle makes no express warranties beyond those stated here. BWI disclaims without limitation, implied warranties of merchantability and fitness for a particular purpose. Some jurisdictions do not allow the exclusion of implied warranties so this limitation may not apply to you. To obtain warranty service, contact BWI Eagle for a return material authorization. When returning equipment to BWI Eagle, the customer assumes the risk of damage or loss during shipping and is responsible for the shipping costs incurred.

DOCUMENT DATE: 18-Jul-07



238 Pillow Street
Butler, PA 16001
(724) 283-4681
Fax (724) 283-5939
www.bwieagle.com