



238 Pillow Street  
Butler, PA 16001  
724-283-4681  
724-283-5939 (fax)  
www.bwieagle.com

# PRODUCT INFORMATION BULLETIN

## TAC-SWITCH Critical Speed Switch MODEL 22-8000DC-24 ALS SERIES

### BOTE APPROVAL

1207-90

### DESCRIPTION

The EAGLE TAC SWITCH 22-8000DC-24ALS Models are a series of 24VDC powered low speed switches that monitor speed and detect motion to as slow as 1 RPM in all types of machinery and apparatus. The EAGLE TAC SWITCH utilizes a non-contacting proximity sensor that may be remotely located up to two miles from the control area. Enclosed in durable ABS plastic, the socket mounted control unit conveniently mounts inside an existing electrical panel or O.E.M control box. Ideal for conveyors, crushers, fans, motors and other rotating machinery applications.

### INSTALLATION

Disconnect DC power before proceeding with installation

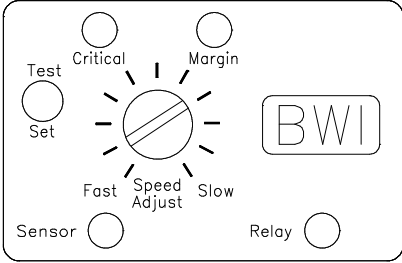
1. Mount the TAC-SWITCH socket inside an existing control panel or other suitable protective enclosure
2. Make the following connections on the socket:

TERMINAL	CONNECTION
1	Sensor - Common (-)
2	Sensor - Positive (+)
3 - 4	No Connection
5	24 VDC Input (+)
6	24 VDC Input (-)
7	Relay - N/C (1)
8	Relay - Common (1)
9	Relay - N/O (1)
10	Relay - N/C (2)
11	Relay - Common (2)
12	Relay - N/O (2)

3. Install EAGLE PROXIMITY SENSOR at roller or shaft. See sensor installation section.



### CONTROLS AND INDICATORS



### SET UP AND TESTING

Final calibration should be performed with the belt loaded and running at normal speed.

1. Turn SPEED control CCW until it stops (approximately 7 o'clock)
2. Hold switch in set position to energize relay.
3. Turn SPEED control CW slowly until CRITICAL SPEED LED stays on continuously.
4. Continue turning SPEED control until MARGIN LED stays on continuously.
5. Turn SPEED control CCW until MARGIN LED begins to blink at the same rate as SENSOR PULSE LED. The CRITICAL SPEED LED must stay on continuously.
6. After RELAY STATUS LED is illuminated, return switch to RUN position (center)
7. A momentary TEST position is provided to simulate the loss of sensor signal which releases the control relay

# TAC-SWITCH

Critical Speed Switch

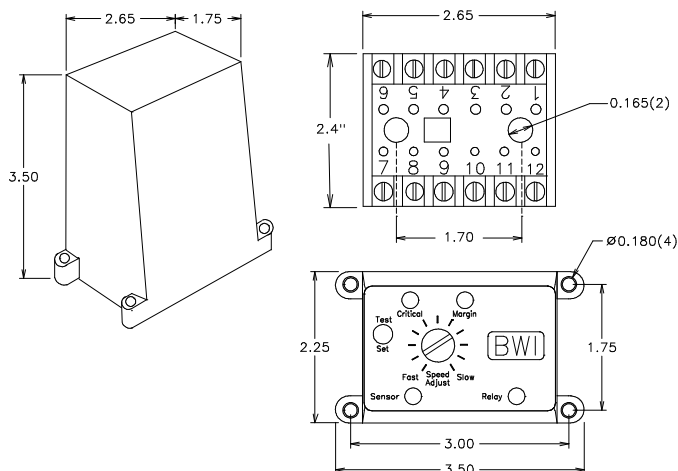
**MODEL 22-8000DC-24**

**ALS SERIES**

## SPECIFICATIONS

DC Input	24 VDC (18 - 36 VDC)
Fuse Protected	2 amp
Speed Ranges	
ALS-1	1 - 30 RPM
ALS-6	6 - 60 RPM
ALS-15	15 - 100 RPM
ALS-25	25 - 100 RPM
Relay Contacts	DPDT 5 amp @ 24VDC
Safety Delay	1 Second
Response Time	1 Second or Less
Enclosure	ABS Plastic

## DIMENSIONS



## REPLACEMENT AND OPTIONAL PARTS

Control Module	22-8002DC-24ALS-1,6,15, OR 25
Mounting Socket	22-8003
Threaded PVC Proximity Sensor	10-7139
I.S. Threaded PVC Proximity Sensor	10-7039
I.S. Zener Barrier	10-7072

## TYPICAL BELT STARTER

TYPICAL BELT STARTER  
22-8000DC INSTALLATION

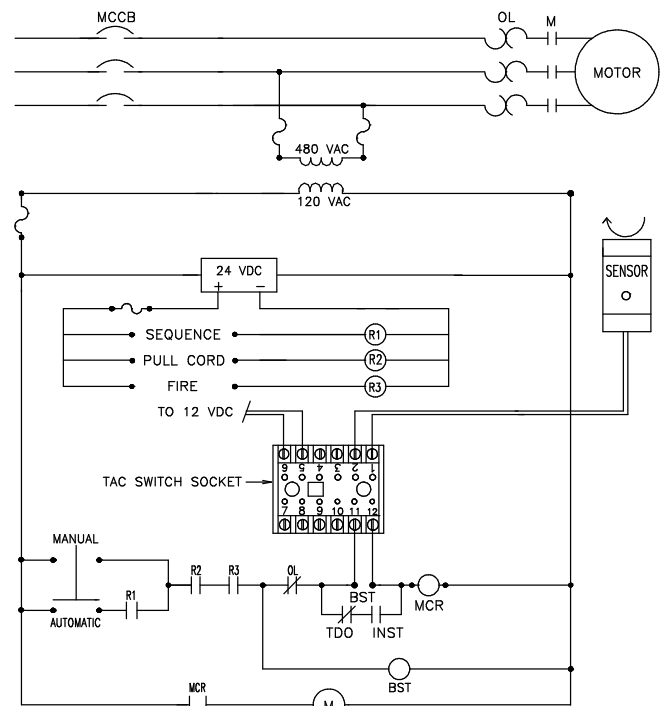


FIGURE 1

DOCUMENT DATE: 17-Apr-02



238 Pillow Street  
Butler, PA 16001  
(724) 283-4681  
Fax (724) 283-5939  
[www.bwieagle.com](http://www.bwieagle.com)